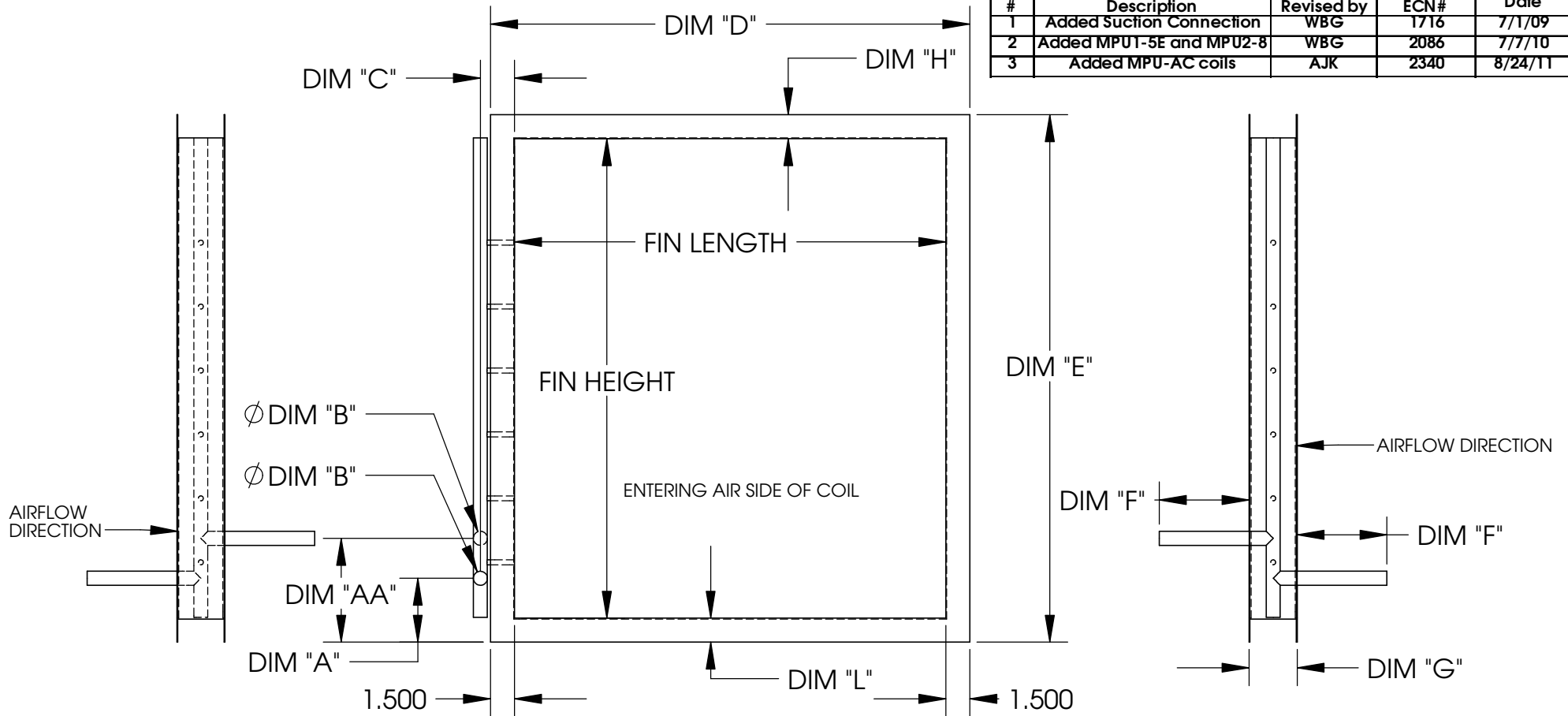


MPU DX COIL

DRAWINGS

8/25/2011

| Revision History |                          |            |      |         |
|------------------|--------------------------|------------|------|---------|
| #                | Description              | Revised by | ECN# | Date    |
| 1                | Added Suction Connection | WBG        | 1716 | 7/7/09  |
| 2                | Added MPU1-5E and MPU2-8 | WBG        | 2086 | 7/7/10  |
| 3                | Added MPU-AC coils       | AJK        | 2340 | 8/24/11 |



| Single Circuit DX Information |          |          |          |           |           |           |
|-------------------------------|----------|----------|----------|-----------|-----------|-----------|
| ID                            | MPU1-2   | MPU1-3   | MPU2-5   | MPU1-2-AC | MPU1-3-AC | MPU2-5-AC |
| FIN HEIGHT                    | 30       | 30       | 36       | 12        | 12        | 20        |
| FIN LENGTH                    | 27       | 27       | 36       | 27        | 27        | 36        |
| DIM "A"                       | 4        | 4        | 4        | 4         | 4         | 4         |
| DIM "AA"                      | 6.5      | 6.5      | 6.5      | 6.5       | 6.5       | 6.5       |
| DIM "B"                       | 0.75     | 0.875    | 0.875    | 0.75      | 0.875     | 0.875     |
| DIM "C"                       | 2.13     | 2.13     | 2.13     | 2.13      | 2.13      | 2.13      |
| DIM "D"                       | 30       | 30       | 39       | 30        | 30        | 39        |
| DIM "E"                       | 33       | 33       | 39       | 33        | 33        | 39        |
| DIM "F"                       | 5.62     | 5.62     | 5.62     | 5.62      | 5.62      | 5.62      |
| DIM "G"                       | 3.01     | 3.01     | 3        | 3.01      | 3.01      | 3         |
| DIM "H"                       | 1.5      | 1.5      | 1.5      | 19.5      | 19.44     | 17.44     |
| DIM "L"                       | 1.5      | 1.5      | 1.5      | 1.44      | 1.44      | 1.44      |
| TONNAGE                       | 2        | 3        | 5        | 2         | 3         | 5         |
| # OF CIRCUITS                 | 1        | 1        | 1        | 1         | 1         | 1         |
| LIQUID SIZE                   | 0.5      | 0.5      | 0.625    | 0.5       | 0.5       | 0.625     |
| HEATCRAFT #                   | 2EZ0801M | 2EZ1001N | 3EZ1001R | 2EY1102E  | 2EY1402E  | 3EY1102T  |

- Notes:
- 1) Distributor tubing bent toward leaving air side of coil.
  - 2) Liquid connection points vertically upwards. 3 inch extensions brazed to distributor.
  - 3) All suction connections to be capped. Cut suction tube required for MPU configuration.

Material: N/A  
Blank Size: N/A x N/A  
Weight: N/A lbs

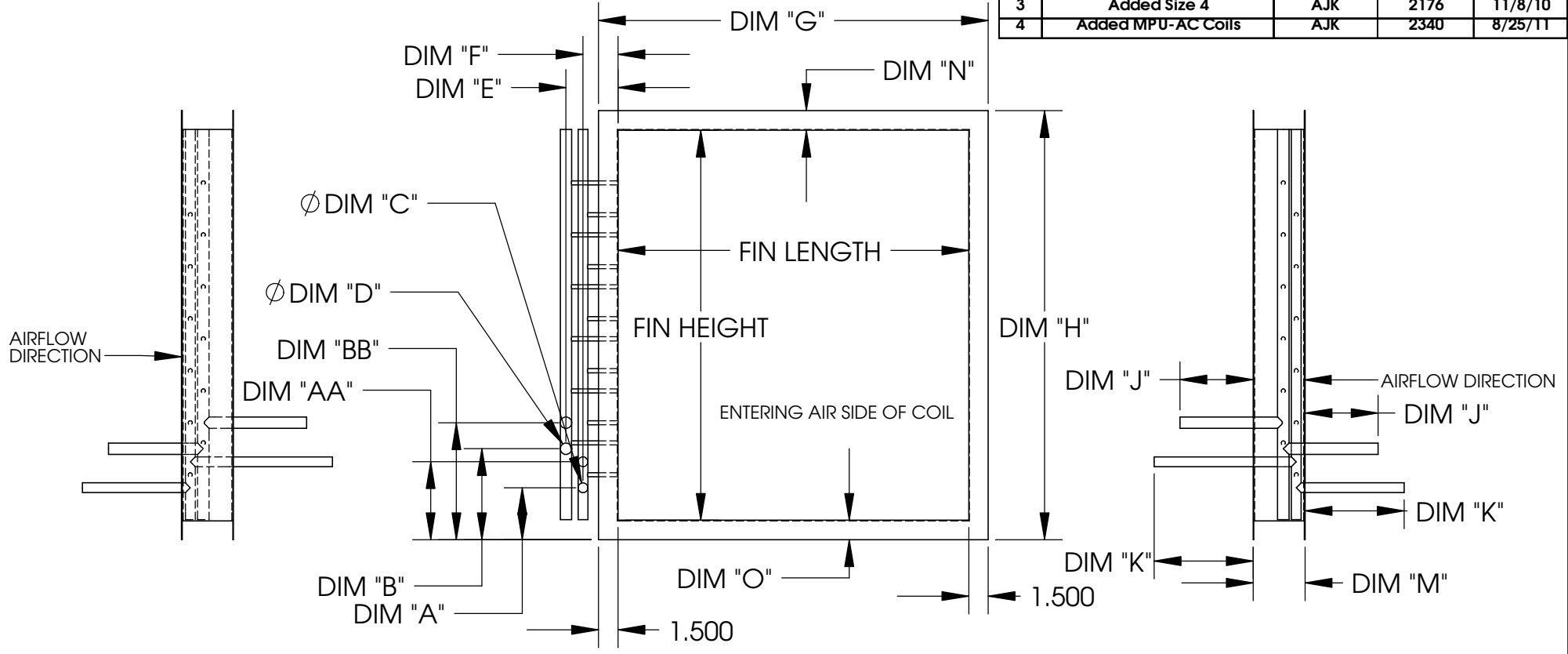
Part Number: N/A  
MACOLA Number: N/A  
Drawing Name: MPU DX Coil  
Drawn By: WBG  
Parent Assembly: MPU  
Sheet: 2 of 4

Unless Otherwise Specified  
Dimensions are in Inches.

Standard Tolerances are:  
Fractions: ±1/16  
Decimal: .XX±.05  
.XXX±.015  
Angles: ±1°

**CONFIDENTIAL**

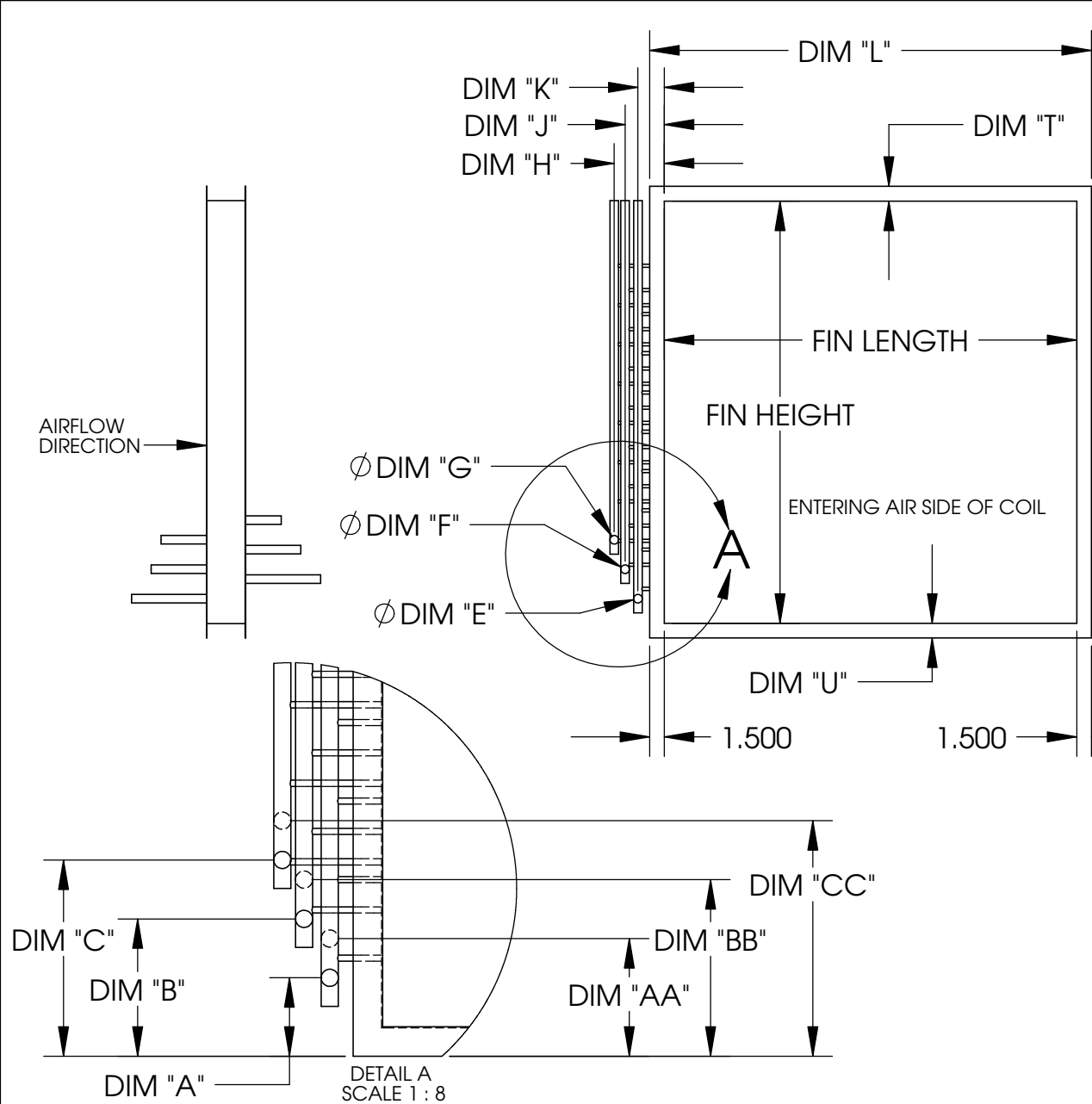
| Revision History |                          |            |      |         |
|------------------|--------------------------|------------|------|---------|
| #                | Description              | Revised by | ECN# | Date    |
| 2                | Added MPU1-5E and MPU2-8 | WBG        | 2086 | 7/7/10  |
| 3                | Added Size 4             | AJK        | 2176 | 11/8/10 |
| 4                | Added MPU-AC Coils       | AJK        | 2340 | 8/25/11 |



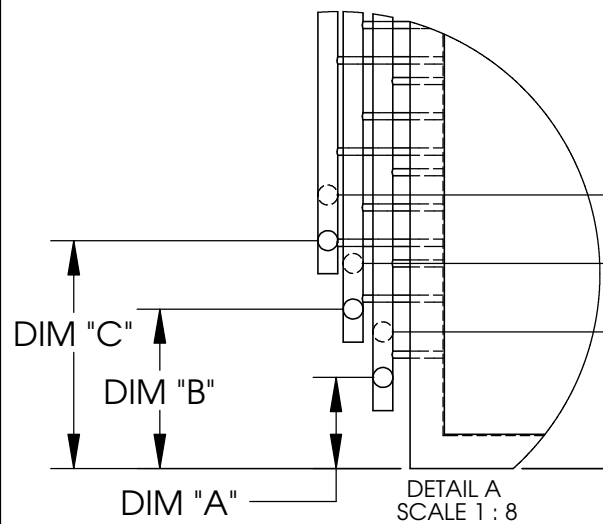
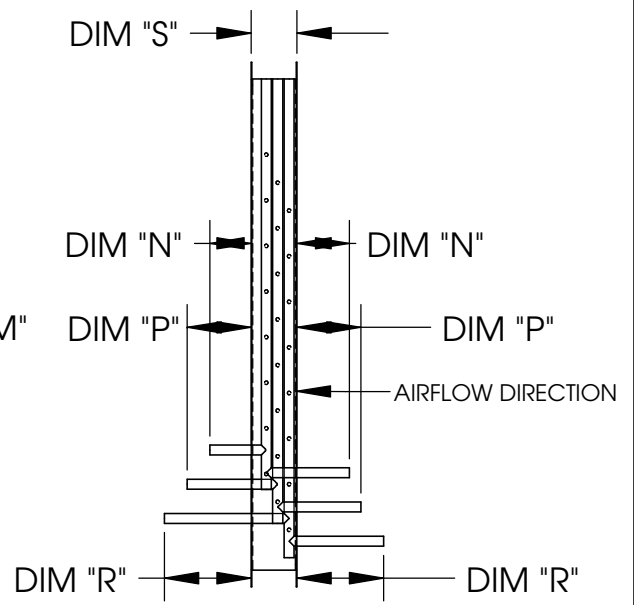
| Two Circuit DX Information |          |          |          |          |          |          |          |           |            |             |           |            |            |
|----------------------------|----------|----------|----------|----------|----------|----------|----------|-----------|------------|-------------|-----------|------------|------------|
| ID                         | MPU1-5   | MPU1-5E  | MPU2-7.5 | MPU2-8   | MPU2-10  | MPU3-10  | MPU4-10  | MPU1-5-AC | MPU1-5E-AC | MPU2-7.5-AC | MPU2-8-AC | MPU2-10-AC | MPU3-10-AC |
| FIN HEIGHT                 | 30       | 30       | 36       | 36       | 36       | 43       | 52.5     | 12        | 12         | 20          | 20        | 20         | 24         |
| FIN LENGTH                 | 27       | 27       | 36       | 36       | 36       | 42       | 48       | 27        | 27         | 36          | 36        | 36         | 42         |
| DIM "A"                    | 4        | 4        | 4        | 4        | 4        | 4        | 4        | 4         | 4          | 4           | 4         | 4          | 4          |
| DIM "AA"                   | 6        | 6        | 6        | 6        | 6        | 6        | 6        | 6         | 6          | 6           | 6         | 6          | 6          |
| DIM "B"                    | 7        | 7        | 7        | 7        | 7        | 7        | 7        | 7         | 7          | 7           | 7         | 7          | 7          |
| DIM "BB"                   | 9        | 9        | 9        | 9        | 9        | 9        | 9        | 9         | 9          | 9           | 9         | 9          | 9          |
| DIM "C"                    | 0.75     | 0.75     | 0.75     | 0.875    | 0.875    | 0.875    | 0.875    | 0.75      | 0.75       | 0.75        | 0.875     | 0.875      | 0.875      |
| DIM "D"                    | 0.875    | 0.75     | 0.875    | 0.875    | 0.875    | 0.875    | 0.875    | 0.875     | 0.75       | 0.875       | 0.875     | 0.875      | 0.875      |
| DIM "E"                    | 4        | 4        | 4        | 4        | 4        | 4        | 4        | 4         | 4          | 4           | 4         | 4          | 4          |
| DIM "F"                    | 2.69     | 2.69     | 2.69     | 2.69     | 2.69     | 2.69     | 2.69     | 2.69      | 2.69       | 2.69        | 2.69      | 2.69       | 2.69       |
| DIM "G"                    | 30       | 30       | 39       | 39       | 39       | 45       | 51       | 30        | 30         | 39          | 39        | 39         | 45         |
| DIM "H"                    | 33       | 33       | 39       | 39       | 39       | 46       | 55.5     | 33        | 33         | 39          | 39        | 39         | 46         |
| DIM "J"                    | 5.62     | 5.62     | 5.62     | 5.62     | 5.62     | 5.62     | 5.62     | 5.62      | 5.62       | 5.62        | 5.62      | 5.62       | 5.62       |
| DIM "K"                    | 1.62     | 1.62     | 1.62     | 1.62     | 1.62     | 1.62     | 1.62     | 1.62      | 1.62       | 1.62        | 1.62      | 1.62       | 1.62       |
| DIM "M"                    | 4        | 4        | 4        | 4        | 3.99     | 4.01     | 4        | 4         | 4          | 4           | 3.99      | 3.99       | 4          |
| DIM "N"                    | 1.5      | 1.5      | 1.5      | 1.5      | 1.5      | 1.5      | 1.5      | 19.44     | 19.44      | 17.25       | 17.44     | 17.5       | 20.44      |
| DIM "O"                    | 1.5      | 1.5      | 1.5      | 1.5      | 1.5      | 1.5      | 1.5      | 1.44      | 1.44       | 1.44        | 1.44      | 1.44       | 1.44       |
| TOTAL TONNAGE              | 5        | 5        | 7.5      | 8        | 10       | 10       | 10       | 5         | 5          | 7.5         | 8         | 10         | 10         |
| #1 TONNAGE                 | 2        | 2.5      | 2.5      | 3        | 5        | 5        | 5        | 2         | 2.5        | 2.5         | 3         | 5          | 5          |
| #2 TONNAGE                 | 3        | 2.5      | 5        | 5        | 5        | 5        | 5        | 3         | 2.5        | 5           | 5         | 5          | 5          |
| #1 LIQUID SIZE             | 0.5      | 0.5      | 0.5      | 0.5      | 0.625    | 0.625    | 0.625    | 0.5       | 0.5        | 0.5         | 0.5       | 0.625      | 0.625      |
| #2 LIQUID SIZE             | 0.5      | 0.5      | 0.625    | 0.625    | 0.625    | 0.625    | 0.625    | 0.5       | 0.5        | 0.625       | 0.625     | 0.625      | 0.625      |
| # OF CIRCUITS              | 2        | 2        | 2        | 2        | 2        | 2        | 2        | 2         | 2          | 2           | 2         | 2          | 2          |
| HEATCRAFT #                | 2EZ0902M | 2EZ0902M | 3EZ1101C | 3EZ1101D | 3EZ0602B | 3EZ0602M | 4EZ0801C | 2EY1403E  | 2EY1403E   | 3EY1402I    | 3EY1302I  | 3EY1203I   | 3EZ1203I   |

- Notes:
- 1) Distributor tubing bent toward leaving air side of coil.
  - 2) Liquid connection points vertically upwards.
  - 3) All suction connections to be capped. Cut suction tube required for MPU configuration.

|                       |  |  |
|-----------------------|--|--|
| Material: N/A         | Parent Number: N/A                                     | Unless Otherwise Specified<br>Dimensions are in Inches.                                      |
| Blank Size: N/A x N/A | MACOLA Number: N/A                                     |  |
| Weight: N/A lbs       | Drawing Name: MPU DX Coil                              |  |
| <b>CONFIDENTIAL</b>   | Drawn By: WBG<br>Parent Assembly: MPU<br>Sheet: 3 of 4 |  |
|                       |  | Standard Tolerances are:<br>Fractions: ±1/16<br>Decimal: .XX±.05<br>.XXX±.015<br>Angles: ±1° |



| Revision History |                        |            |      |         |
|------------------|------------------------|------------|------|---------|
| #                | Description            | Revised by | ECN# | Date    |
| 0                | Released to production | WBG        | 2143 | 10/5/10 |
| 1                | Created Size 4         | AJK        | 2176 | 11/8/10 |
| 2                | Added MPU-AC Coils     | AJK        | 2340 | 8/24/11 |



| Three Circuit DX Information |          |          |            |
|------------------------------|----------|----------|------------|
| ID                           | MPU3-15  | MPU4-15  | MPU3-15-AC |
| FIN HEIGHT                   | 43       | 52.5     | 30         |
| FIN LENGTH                   | 42       | 48       | 42         |
| DIM "A"                      | 4        | 4        | 4          |
| DIM "AA"                     | 6        | 6        | 6          |
| DIM "B"                      | 7        | 7        | 7          |
| DIM "BB"                     | 9        | 9        | 9          |
| DIM "C"                      | 10       | 10       | 10         |
| DIM "CC"                     | 12       | 12       | 12         |
| DIM "E"                      | 0.875    | 0.875    | 0.875      |
| DIM "F"                      | 0.875    | 0.875    | 0.875      |
| DIM "G"                      | 0.875    | 0.875    | 0.875      |
| DIM "H"                      | 5.108    | 5.108    | 5.108      |
| DIM "J"                      | 4        | 4        | 4          |
| DIM "K"                      | 2.69     | 2.69     | 2.69       |
| DIM "L"                      | 45       | 51       | 45         |
| DIM "M"                      | 46       | 55.5     | 46         |
| DIM "N"                      | 3.62     | 3.62     | 3.62       |
| DIM "P"                      | 5.62     | 5.62     | 5.62       |
| DIM "R"                      | 7.62     | 7.62     | 7.62       |
| DIM "S"                      | 4.49     | 5.09     | 4.01       |
| DIM "T"                      | 1.5      | 1.5      | 14.44      |
| DIM "U"                      | 1.5      | 1.5      | 1.44       |
| TOTAL TONNAGE                | 15       | 15       | 15         |
| #1 TONNAGE                   | 5        | 5        | 5          |
| #2 TONNAGE                   | 5        | 5        | 5          |
| #3 TONNAGE                   | 5        | 5        | 5          |
| #1 LIQUID SIZE               | 0.625    | 0.625    | 0.625      |
| #2 LIQUID SIZE               | 0.625    | 0.625    | 0.625      |
| #3 LIQUID SIZE               | 0.625    | 0.625    | 0.625      |
| # OF CIRCUITS                | 3        | 3        | 3          |
| HEATCRAFT #                  | 3EZ1002B | 4EZ0602B | 3EY1403T   |

- Notes:
- 1) Distributor tubing bent toward leaving air side of coil.
  - 2) Liquid connection points vertically upwards. 3 inch extensions brazed to distributor.
  - 3) All suction connections to be capped. Cut suction tube required for MPU configuration.

|                       |                           |  |
|-----------------------|---------------------------|--|
| Material: N/A         | Part Number: N/A          | Unless Otherwise Specified<br>Dimensions are in Inches.                                      |
| Blank Size: N/A x N/A | MACOLA Number: N/A        |  |
| Weight: N/A lbs       | Drawing Name: MPU DX Coil |  |
| <b>CONFIDENTIAL</b>   | Drawn By: WBG             |  |
|                       | Parent Assembly: MPU      |  |
|                       | Sheet: 4 of 4             | Standard Tolerances are:<br>Fractions: ±1/16<br>Decimal: .XX±.05<br>.XXX±.015<br>Angles: ±1° |